



DEPARTMENT OF TRADE AND COMMERCE  
STANDARDS BRANCH

**E-12**

OTTAWA.....July 23, 1965.

NOTICE OF APPROVAL

FOR

GENERAL ELECTRIC TYPES "V-64A" AND "V-64S" 3-ELEMENT POLYPHASE  
WATTHOUR METERS

Apparatus

Current Ranges (amperes)

V-64A	.12-10*	1.2-100
V-64S	.12-10 <sup>o</sup>	1.2-100

Voltages

120 and 240<sup>#</sup>

Elements

3

Circuit

3-phase 4-wire Y

Frequency

60 cycles

Kh (120 volt)

.12-10 amp. 1.8, 1.2-100 amp. 10.8

Registers

4 and 5 circle x 1 and 4 circle x 10

.12-10 ampere rating

4-circle x 1 Rr = 111 1/9 and 5-circle x 1 Rr = 111 1/9

1.2-100 ampere rating

4-circle x 10, Rr = 185 5/27 or 5-circle x 1 Rr 18 14/27

Approved attachments

D-30V and D-41 contact devices  
M-30 demand register.

\* .12-10 ampere rating may be self-contained or for use with instrument transformers. Potential indicating lamps are optional on the self-contained meters but standard equipment on the transformer type

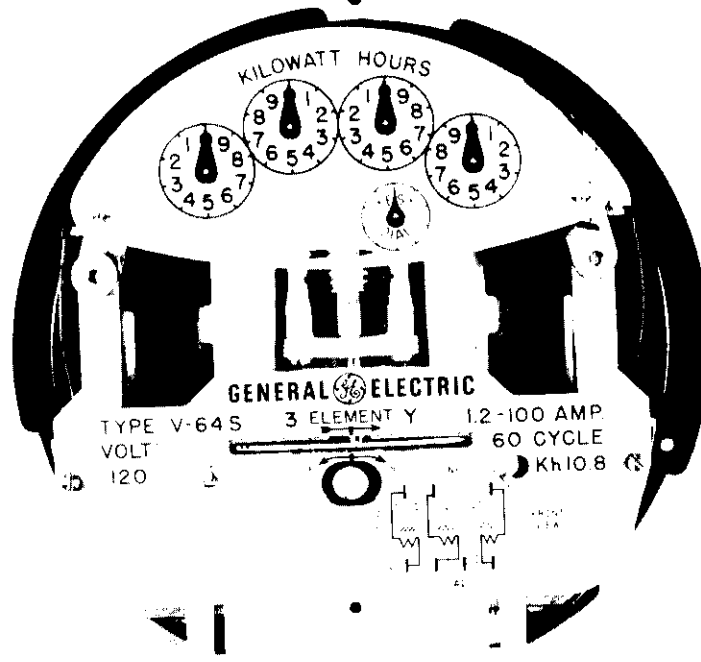
# 240 volt meters are approved for use on 277 volt circuits, but will be marked and tested as 240 volt meters

♯ All 4-circle and 5-circle x 1 with Rr = 111 1/9 will have test dials

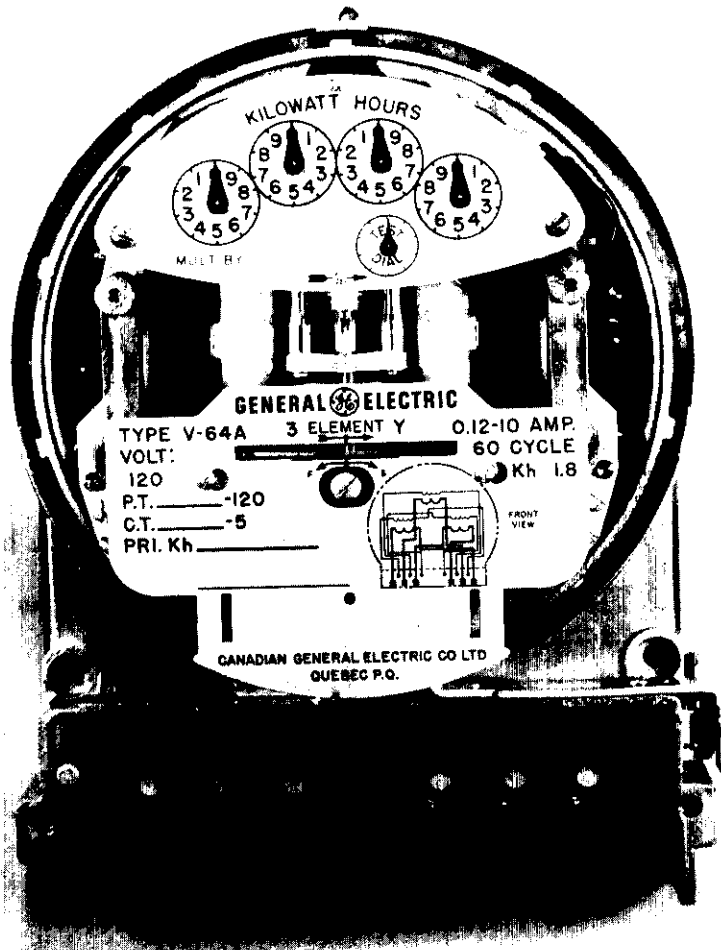
o The type V-64S .12-10 ampere transformer type must be sealed with a lead seal

GENERAL ELECTRIC TYPES "V-64A" AND "V-64S" 3-ELEMENT POLYPHASE

WATTHOUR METERS



CANADIAN GENERAL ELECTRIC CO LTD  
QUEBEC P.Q.



CANADIAN GENERAL ELECTRIC CO LTD  
QUEBEC P.Q.

- 2 -

Description

The type V-64 is a three stator, single disc meter designed for use on unbalanced 3-phase 4-wire Y systems. It has a view "U" frame to take care of the 3rd element and all elements are smaller than those used in the type V-63 receiving approval under SD-EA.404 to enable them to fit under the standard size round glass cover. The disc is laminated and has a larger radius than other V-60 meters, and is magnetically suspended.

The addition of the 3rd element requires that the disc be moved further back so that a register drive assembly is used to join the disc shaft and the register. This register drive assembly provides a 2-pitch worm for standard registers and an 8-tooth pinion for contact devices.

There is one full load adjustment on the magnet at the front, two light-load and stator balance adjustments on the two side stators and three power factor adjustments, one for each stator.

When sealing the type V-64S with a lead seal, care should be taken to have the wires as short as possible so that the lead seal cannot touch any of the blades. Also clip off the excess wire.

Approval granted to: Canadian General Electric Company Limited,  
Quebec 8,  
P. Q.

*W. J. S. Fraser*  
W. J. S. Fraser,  
Chief, Standards Laboratory,  
Standards Branch.

*K. Cryer*  
K. Cryer,  
Chief, Electricity & Gas Division,  
Standards Branch.

Ref: SL-100-801 I